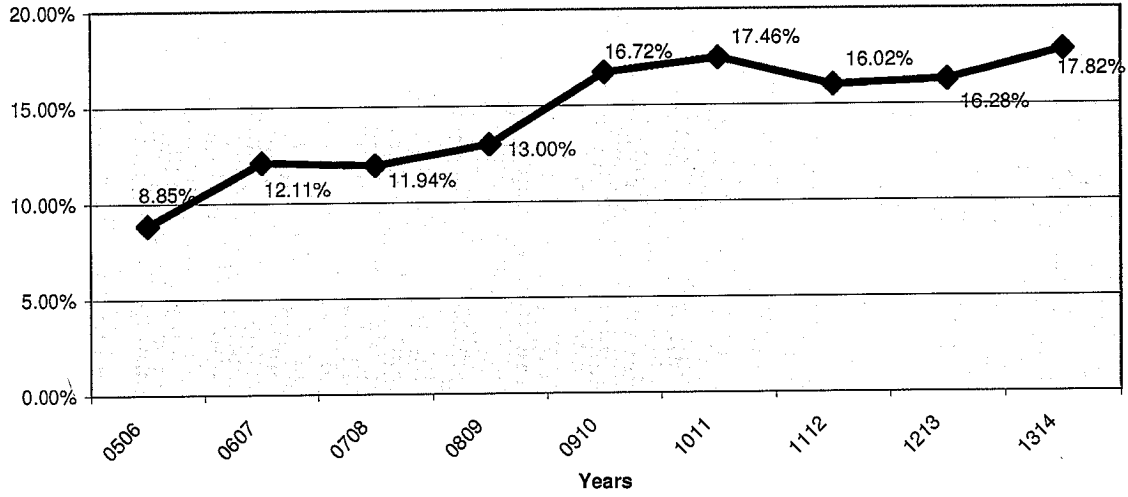
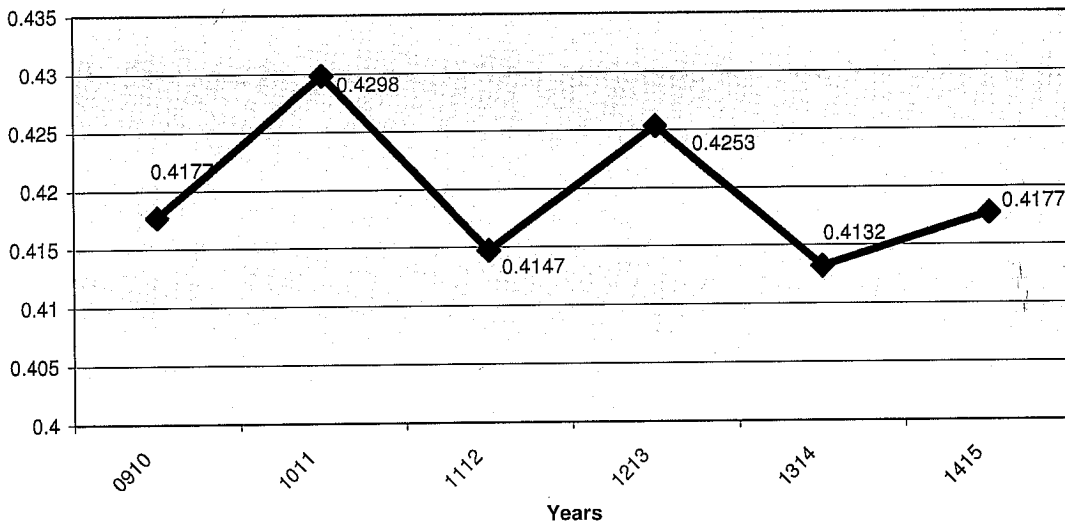


NORTHWESTERN LEHIGH SCHOOL DISTRICT

Free and Reduced Eligible Percentage

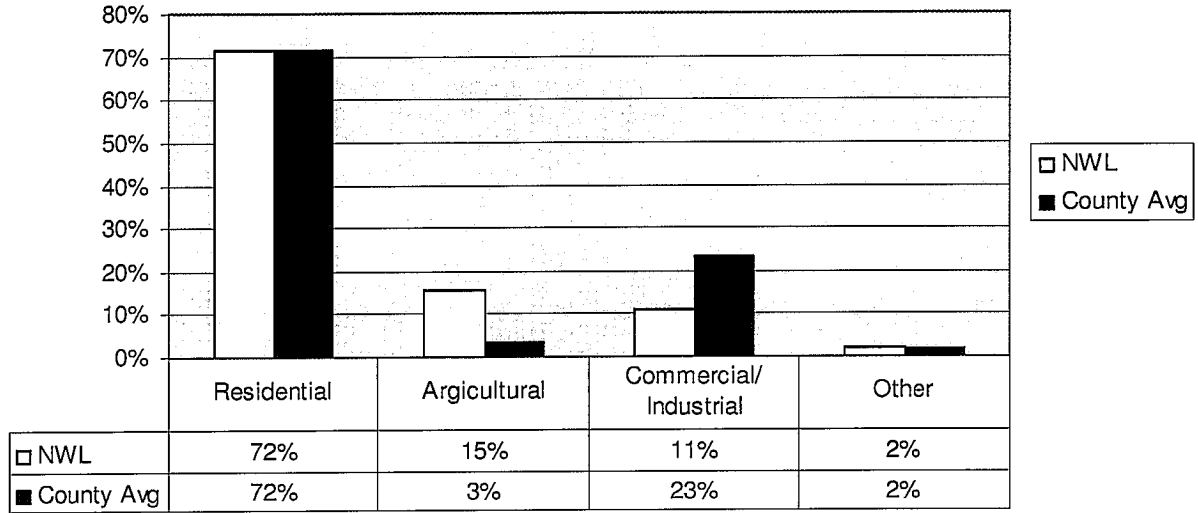


Market Value Personal Income Aid Ratio (MV/PI)



NORTHWESTERN LEHIGH SCHOOL DISTRICT

REAL ESTATE TAXES



	Tax Duplicate	Duplicate Growth	Gaming Revs (Homestead/Far mstead)	Taxes Budgeted/ Collected	Collection Rate
1112-Actual	22,294,803		665,966	21,845,771	95.33%
1213-Actual	22,346,442	0.23%	665,883	21,936,115	95.58%
1314-Actual	22,624,180	1.24%	666,586	22,107,480	95.02%
1415-Budget	23,410,945	3.48%	672,236	22,106,131	96.00%

**2014-15 Budget includes new TIF revenues
 Collection rate is net of Gaming Revenues
 District has not raised taxes since 2010-11- 4 years with NO TAX Increase
 2014-15 Value of 1 mill = \$1.4 million

Net PSERS Cost

